

CL-1200i

Chemiluminescence Immunoassay System

Simple yet Robust

Technical Specifications

General Information

Throughput Up to 180 tests/hour
Measurement Principle Micron superparamagnetic particles platform with alkaline phosphatase (ALP) labeled reagents and AMPPD substrate

Sample Assembly

Sample Feeder Continuous sample loading and offloading by sample racks
Sample Rack 10 positions per rack, same as BS-800/BS-2000/CL-2000i series
Sample Capacity Up to 60 samples in one batch
Sample Probe Steel probe, liquid level detection, clot detection, horizontal and vertical collision protection
Sample Volume 10µl~200µl, with increment of 1µl
Sample Dilution Automatic dilution with 1:2 ~ 1:80

Reagent Assembly

Reagent Disk 25 reagent positions, continuous loading, real-time mixing for magnetic particles
Cooling System 2°C~8°C
Reagent Pack 50 tests per pack, 100 tests per pack
Reagent Scanning Built-in/external bar code reader scanning
Reagent Probe Steel probe, liquid level detection, bubble detection, horizontal and vertical collision protection
Reagent Volume 20µl~200µl, with increment of 1µl

Substrate System

Substrate Bottle 300/500 tests per bottle, bottom piercing
Substrate Loading Capable of continuous loading during testing
Substrate Heating Constant heating
Aspiration Volume 200µl

Magnetic Separation Unit Separation Assembly

Temperature 4-phase magnetic separation
 Accuracy: 37±0.3°C, fluctuation: ±0.2°C

Measurement and Reaction System

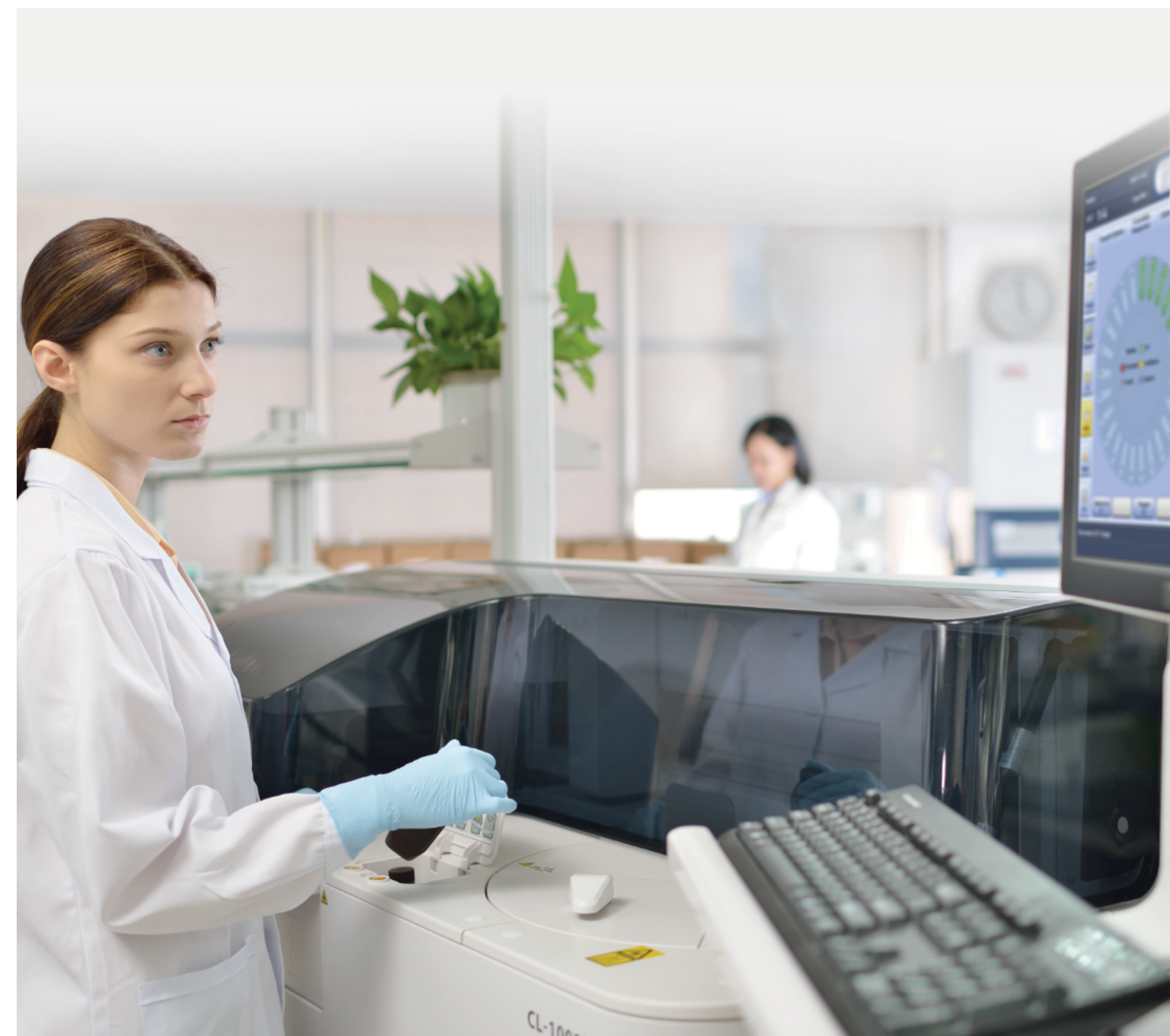
Detection Mode Photon counting
Signal Detector Photomultiplier (PMT) photon counter
PMT Calibration LED reference module
Reaction Carousel 75 positions
Temperature Accuracy: 37±0.3°C, fluctuation: ±0.2°C
Mixing Unit Non-touch vortexer mixing

Cuvette Loading and Waste Collection

Cuvette Disposable plastic cuvette
Cuvette Loading 88 cuvettes per tray, two trays can be loaded in one batch, continuous loading and offloading
Waste Collection Waste container, 185 cuvettes per box

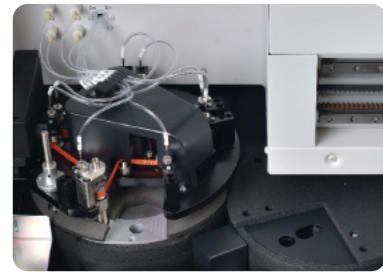
Working Conditions

Power Supply 110V/115V~, 60Hz; 220V-240V~, 50Hz; 220V/230V~, 60Hz
Input Power 2000VA
Operating Temperature 15°C~30°C
Relative Humidity 35%RH~80%RH, without condensation
Dimension Main Unit: 1400mm*760mm*600mm (W*D*H)
 Weight: 225kg
Altitude Height -400m~4000m



CL-1200i

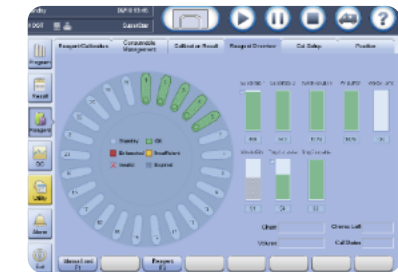
Chemiluminescence Immunoassay System



Enhanced Reaction System

- 4-phase magnetic separation with precisely controlled temperature
- Consistent performance reliability with enhanced PMT detection system
- Non-touch vortexer mixing for reaction solution without any contamination

Simple yet Robust



Intuitive Software Interface

- Unified software interface, significantly reduces training effort
- Smooth interchange by intuitive software navigation
- Easy access to touch screen monitor with swing arm (optional)



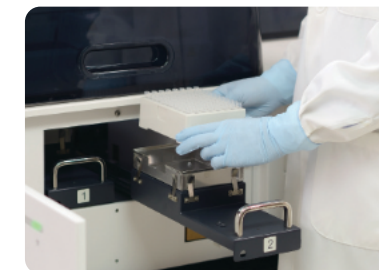
Sample & Reagent Probe

- Precisely controlled syringe motors offer high precision aspiration
- Intelligent liquid level detection, clot detection, vertical and horizontal collision protection
- Efficient interior & exterior probe wash with high pressure wash buffer
- Programmable enhanced probe wash with detergent



Sample Handling

- Samples loading and offloading continuously by sample racks
- Unified sample racks with detachable adaptor
- Rack status real-time indicating on lane numbers
- STATs prioritized fast



Consumables Management

- Random access for cuvette loading without pause or stop
- 88*2 cuvettes in one batch, 200 cuvettes per waste bag
- Cuvettes & waste bag status real-time indicating



Reagent & Substrate Handling

- Easy for reagent & substrate handling, liquid reagents ready-to-use
- 2°C~8°C non-stop refrigerated reagent carousel featured 25 positions
- Same reagent pack size with CL-2000i (50 tests/100 tests per pack)
- Reagents stable on board for up to 56 days



Test menu

Thyroid	Infectious Disease	Fertility	Tumor marker	Bone Metabolic	Cardiac
<p>FT3 FT4 T3 T4 TSH Anti-Tg Anti-TPO Tg rT3 TRAb</p>	<p>HIV Combo HBsAg Anti-HBs HBeAg Anti-HBe Anti-HBc Anti-HCV** Anti-TP (Syphilis) HAV IgM*</p>	<p>Total β-HCG FSH LH Prolactin Estradiol Estriol TESTO PROG AMH Free testosterone* 17-OH PROG* SHBG*</p>	<p>C E A AFP CA125 CA15-3 CA19-9 Free PSA Total PSA NSE CYFRA 21-1 CA72-4 PG I PG II SCCA HE4 ProGRP CA50 CA242 PIVKA-II* AFP-L3%* Hp IgG* G-17*</p>	<p>Intact PTH Calcitonin Vitamin D total</p>	<p>CK-MB Myoglobin Troponin I BNP NT-proBNP*</p>
Diabetes	Adrenal Function	Liver Fibrosis	COVID-19	ToRCH	Growth Hormone
<p>DM Insulin C-peptide</p>	<p>DHEA-S Cortisol ACTH</p>	<p>Laminin Hyaluronic Acid PIIINP Collagen IV</p>	<p>SARS-COV-2 IgG SARS-COV-2 IgM SARS-COV-2S-RBD IgG SARS-COV-2 Neutralizing Antibody</p>	<p>Toxo IgG Toxo IgM Rubella IgG Rubella IgM CMV IgG CMV IgM HSV-1/2 IgG* HSV-1/2 IgM* HSV-1 IgG* HSV-2 IgG*</p>	<p>GH* IGF-1*</p>
Anemia	Hypertension	Inflammation	DS' Screening		
<p>Ferritin Vitamin B12 Folate RBC Folate</p>	<p>Renin Aldosterone</p>	<p>Procalcitonin IL-6 sCD14-ST</p>	<p>PAPP-A* Free β-HCG*</p>		

*: Under development
 **: Non-CE