

# FUS-2000

Urinalysis Hybrid



## Specification

Sample types	Urine
Sample loading	50/270 samples(optional)
Throughput	120 T/H
Sample volume	Minimum volume: 3ml; aspiration volume: approx. 2.0ml
Urinalysis System	Windows 10 operating system, Bidirectional to LIS/HIS
Memory capacity	100,000 or more records
External output	RS-232 USB Net Port
Operation condition	15-35℃
Humidity	≤80%
Weight	82kg(with reclaiming tray 114kg)
Dimension	688mm×779mm×584mm (L×W×H)
Power supply	~100-240V 50HZ/60HZ
Printer	External printer

## Urine chemistry

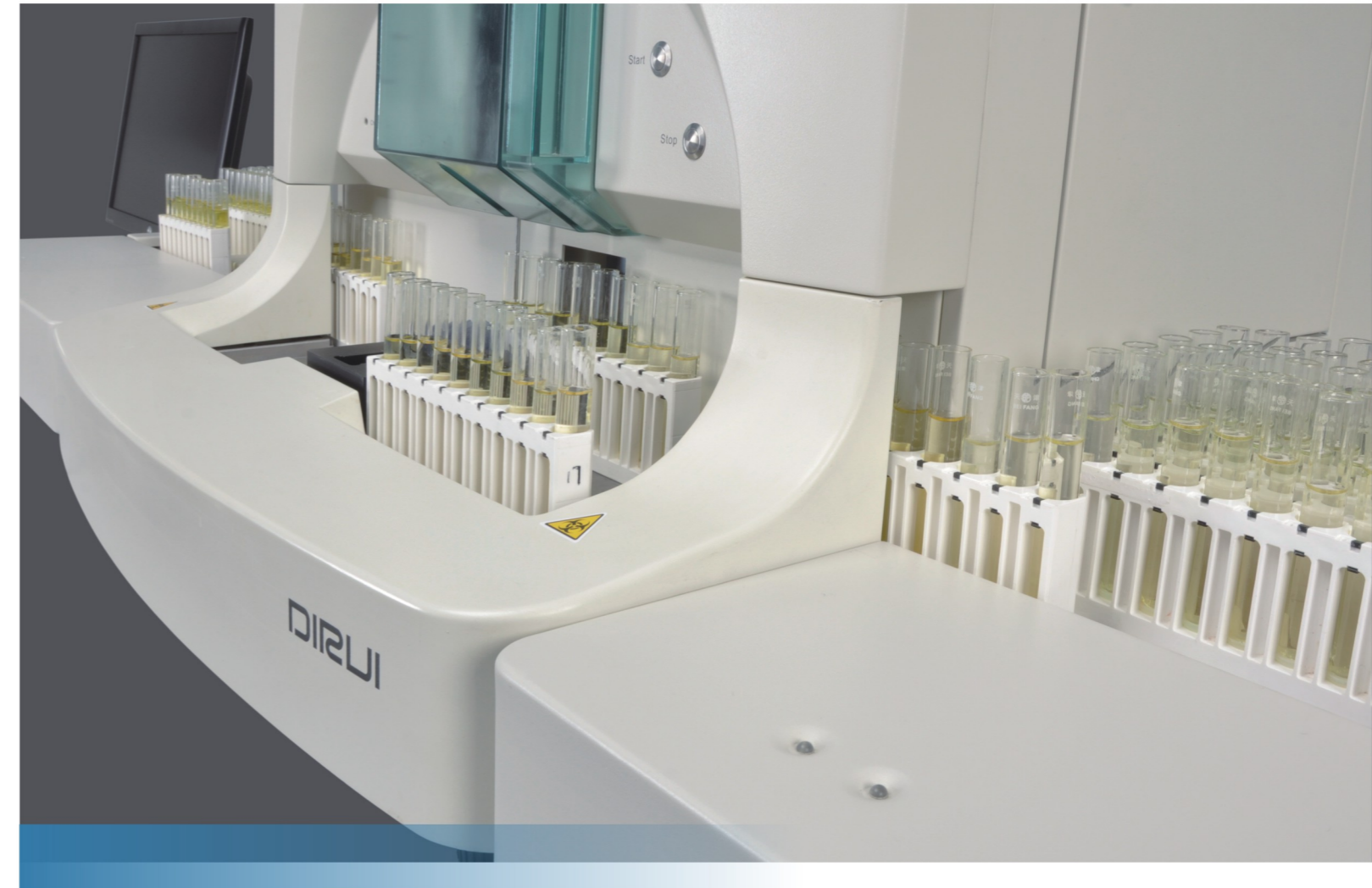
Throughput	240 T/H
Sample volume	Minimum volume: 2ml; aspiration volume: 1.2ml
Analysis parameters	Urobilinogen, Bilirubin, Ketones, Blood, Protein, Nitrite, Leucocyte, Glucose, PH, Creatinine, Calcium, Vitamin C, Microalbumin, Specific Gravity, Color, Turbidity
Principles	Photoelectric colorimetry
Wavelength	525nm 572nm 610nm 660nm
Max loading strips	200 strips

## Urine formed elements

Throughput	120 T/H
Sample volume	Minimum volume: 3ml; aspiration volume: 2.0ml
Analysis parameters	Red blood cell, White blood cell, Squamous epithelial cell, Non-squamous epithelial cell, Hyaline casts, unclassified casts, Mucus, Bacteria, Yeast, White blood cell clumps, Sperm
Research parameters	RBC information
Test Principle	Flow imaging technique
	All software



Certified to  
ISO 9001 and ISO 13485  
QC080000



# FUS-2000

Urinalysis Hybrid



## DIRUI INDUSTRIAL CO., LTD.

3333 Yiju Street, New & High Tech. Development Zone  
Changchun, Jilin 130103, P.R. China  
Tel: +86(431)81935329 85100409  
Fax: +86(431)85172581 85083741  
E-mail: dirui@dirui.com.cn Http://www.dirui.com.cn  
• Specifications subject to change without notice.

20171017

# DIRUI

# DIRUI

# FUS-2000

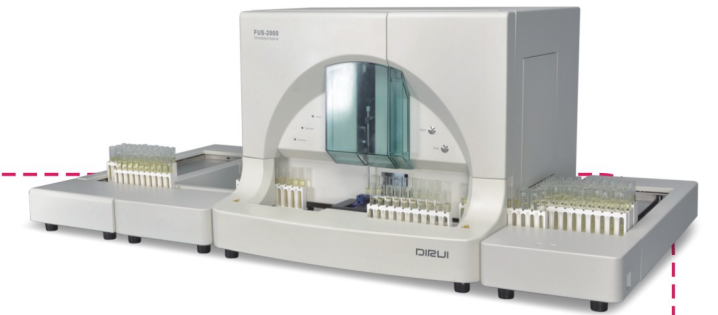
Urinalysis Hybrid

The FUS-2000 is a fully automatic integrated urinalysis system which not only provides results from urine chemistry and urine formed elements but also provides genuine physical images of each formed element.



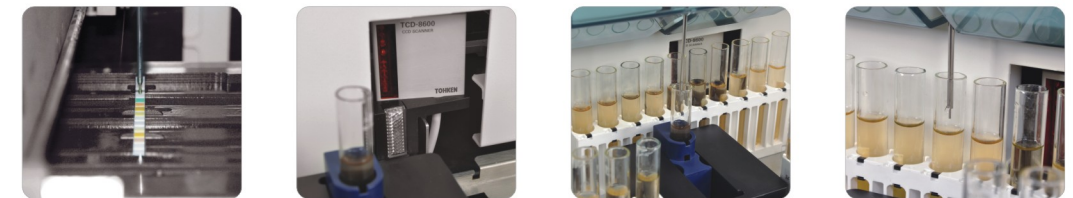
- High throughput:120T/H
- Simple and compact 2 in 1 design
- Standardized urinalysis testing solution
- Walk-away operation with continuous loading 50/270 samples (optional)
- User-friendly design, simple operation and convenient maintenance

## Test Principle

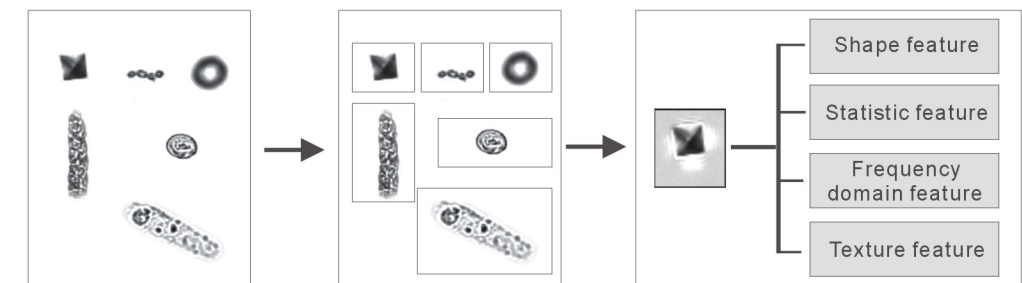


Comparing the results of dry chemistry with digital imaging, FUS-2000 could provide accurate and reliable results, effectively lowering the possibility of both false positive and false negative results.

- High precision aspiration and dripping system guarantees accurate sample distribution on the urine strips.
- Patient ID is automatically recognized by the barcode reading system.
- STAT port provides emergency sample priority.
- Blank pad for the correction of influence from urine color variation.



The FUS-2000 utilizes flow imaging technique and AII technology to not only provide the user with objective results but also with genuine physical images.

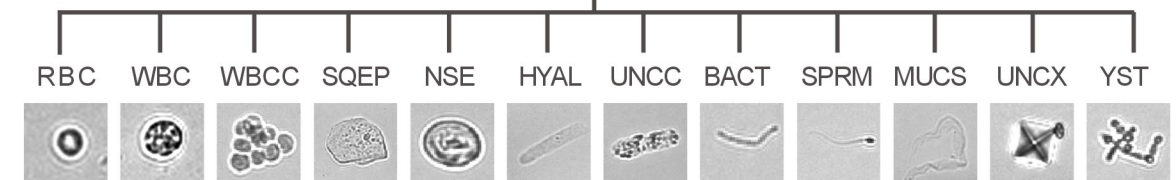


( 1 ) Capture

( 2 ) Segment

( 3 ) Feature extraction

Artificial Intelligence Identification Technique



( 4 ) Identification and Classification