

TEST ITEMS

Basic blood-gas	Haematology	Electrolyte	Biochemistry
pH, pCO ₂ , pO ₂	Hct	K ⁺ , Na ⁺ , Ca ⁺⁺ , Cl ⁻	Glu, Lac

CALCULATION PARAMETERS

Total 23 Parameters:

cH⁺, cH⁺(T), pH(T), pCO₂(T), pO₂(T), HCO₃⁻atd, HCO₃⁻std, BB(B), BE(B), BE(ecf), ct CO₂, Ca⁺⁺(7.4), AnGap, tHb(est), sO₂(est), pO₂(A-a), pO₂(A-a)(T), pO₂(a/A), pO₂(a/A)(T), RI, RI(T), pO₂/FI O₂, pO₂(T)/FI O₂

TEST PACKAGES

Test Item \ Cat No.	W459	W460	W461	W462	W463	W464	W465	W466
pH	•			•	•	•	•	•
Co ₂	•			•	•	•	•	•
O ₂	•			•	•	•	•	•
K ⁺		•	•	•	•	•	•	•
Na ⁺		•	•	•	•	•	•	•
Ca ⁺⁺			•			•	•	•
Cl ⁻		•	•	•	•		•	•
Hct					•	•	•	•
Glu								•
Lac								•



Fight for time and grab treatment opportunity for critical patients whenever wherever!

Blood Gas Analyzer
 • Reliable • Portable • Accurate • Efficient



BGA-102

CE NMPA

1 BENIFITS

Automatic Sampling Process

Without manual operation, the procedure is more simple.

Maintenance Free

Compact instrument design, no internal liquid path, no need for maintenance.

Easy To Use

Only two steps are required to complete one sample test.

Accurate Results

Good correlation with the Radiometer and help doctors make a diagnosis.

Carry With Ease

Small and light, humanized handle makes it easier to carry.



302(L)*226(W)*180(H) mm
No more than 6.5 kg
(including battery but no power adapter)

Design advantages make it adapt to different scenarios.



Battery powered



Built-in Printer



LIS Connect Function



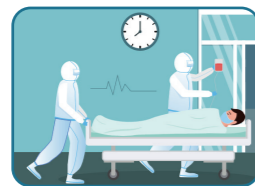
Operate Video

2 APPLICATION SCENARIOS

Necessary equipment for medical institutions to treat critically ill patients.



ICU/CCU/NICU



ER



OR



Pneumology Department



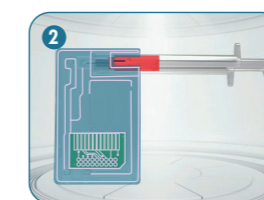
Ambulance

3 OPERATION

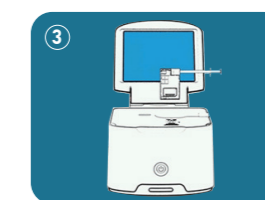
Two-steps operation, One complete test.



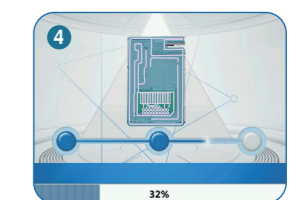
Sampling



Connecting



Inserting

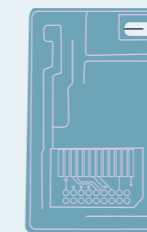


Reading

4 COMPONENTS

Less product component, better user experience.

Test Card



One test card, multiple solutions.

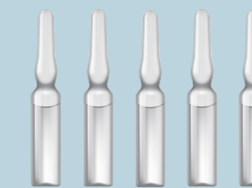
- Sample Type: Arterial Whole Blood
- Sample Volume: 80 μ L
- Reading Time: 45 s
- Store at room temperature for up to 12 months
- Suitable for syringe and capillary sampler.

Reagent Pack



- Storage Condition: 2~8°C
- Shelf Life: 12 months
- Installed Life:
10 parameters: 45 days
8 paremeter: 60 days

Quality Control



- Internal electronic QC
- External electronic includes three levels liquid quality control